

SPECIFICATION FOR LCM MODULE

**MODULE NO.:TFT-0162
DOC. REVISION01**

Customer Approval:

--

	SIGNATURE	DATE
PREPARED BY (RD ENGINEER)		
PREPARED BY (QA ENGINEER)		
CHECKED BY		
APPROVED BY		

WRITTEN BY	CHECKED BY	APPROVED BY

Notes:

- 1、 Please contact GTK before assigning your product based on this module specification.
- 2、 To improve the quality of product, and this product specification is subject to change without any notice.

REVISION RECORD

REV NO.	REV DATE	CONTENTS	REMARKS
V0.1	2014-12-25	First release	Preliminary

CONTENTS

■ GENERAL INFORMATION.....	4
■ ABSOLUTE MAXIMUM RATINGS.....	4
■ ELECTRICAL CHARACTERISTICS.....	4
■ BACKLIGHT CHARACTERISTICS.....	5
■ EXTERNAL DIMENSIONS.....	5
■ ELECTRO-OPTICAL CHARACTERISTICS.....	7
■ INTERFACE DESCRIPTION.....	9
■ AC CHARACTERISTICS.....	10
■ POWER SEQUENCE.....	12
■ REFERENCE APPLICATION CIRCUIT.....	13
■ RELIABILITY TEST CONDITIONS.....	14
■ INSPECTION CRITERION.....	15
■ PACKING SPECIFICATION.....	20

■ GENERAL INFORMATION

Item of general information	Contents	Unit
LCD size	12.1 inch	/
LCD type	TFT/TRANSMISSIVE normal white	
View direction	12 o'clock	
Resolution	800*3(RGB)*600	
Module size (W × H×T)	279(W)×209(H)×9.0(T)	mm ³
Active area (W×H)	246(W)×184.5(H)	mm ²
Pixel pitch (W × H)	0.3075(W)×0.3075(H)	mm ²
Interface Type	LVDS interface	/
Input voltage	3.3V	V
Module Power consumption	6.7(Frame rate=60HZ)	w
Backlight Type	LED	/

■ ABSOLUTE MAXIMUM RATINGS

Item	Symbol	MAX	Unit
Supply voltage	VDD	3.6	V
CMOS/TTL input voltage	Vin	3.6	V
CMOS/TTL output voltage	Vout	3.6	V
LVDS receiver input voltage	Vin	3.6	V
Operating temperature range	TOPR	-40~95	°C
Storage Temperature range	TSTG	-55~125	°C

■ ELECTRICAL CHARACTERISTICS

DC CHARACTERISTICS

Parameter	Symbol	Conditions	Spec.			Unit
			Min.	Typ.	Max.	
Supply voltage	VDD	-	-	3.3	-	V
Supply Current	I _{dd}	F=54MHz VDD33=3.3V PI=13KΩ, RL=100Ω Pixel checker pattern	-	75	-	mA
CMOS/TTL DC SPECIFICATIONS						
High Level Input Voltage	V _{ih}	-	0.7VDD33	-	VDD33	V
Low Level Input Voltage	V _{il}	-	VSS	-	0.3VDD33	V
High Level Output Voltage	V _{oh}	-	0.8VDD33	-	VDD33	V
Low Level Output Voltage	V _{ol}	-	VSS	-	0.2VDD33	V

LVDS DC SPECIFICATIONS						
Differential Input High Threshold	Vth	Vlvc _m =1.2V	-	-	+100	mV
Differential Input Low Threshold	Vtl		-100	-	-	mV
LVDS Common mode	Vic	-	0.7	-	1.6	V
LVDS swing Voltage	Vid	-	±100	-	±600	mV
Input Current	I _{in}	V _{in} =+2.4V/0V	-	-	10	μA
RSDS DC SPECIFICATIONS						
Output differential voltage	V _{od}	R _L =100Ω P _I =13KΩ (Temp=25°C)	-	TBD	-	mV
Output offset voltage	V _{os}		1.0	1.2	1.4	V
Output Current	I _{os}	Output shorted to GND	-	-3.5	-5.0	mA

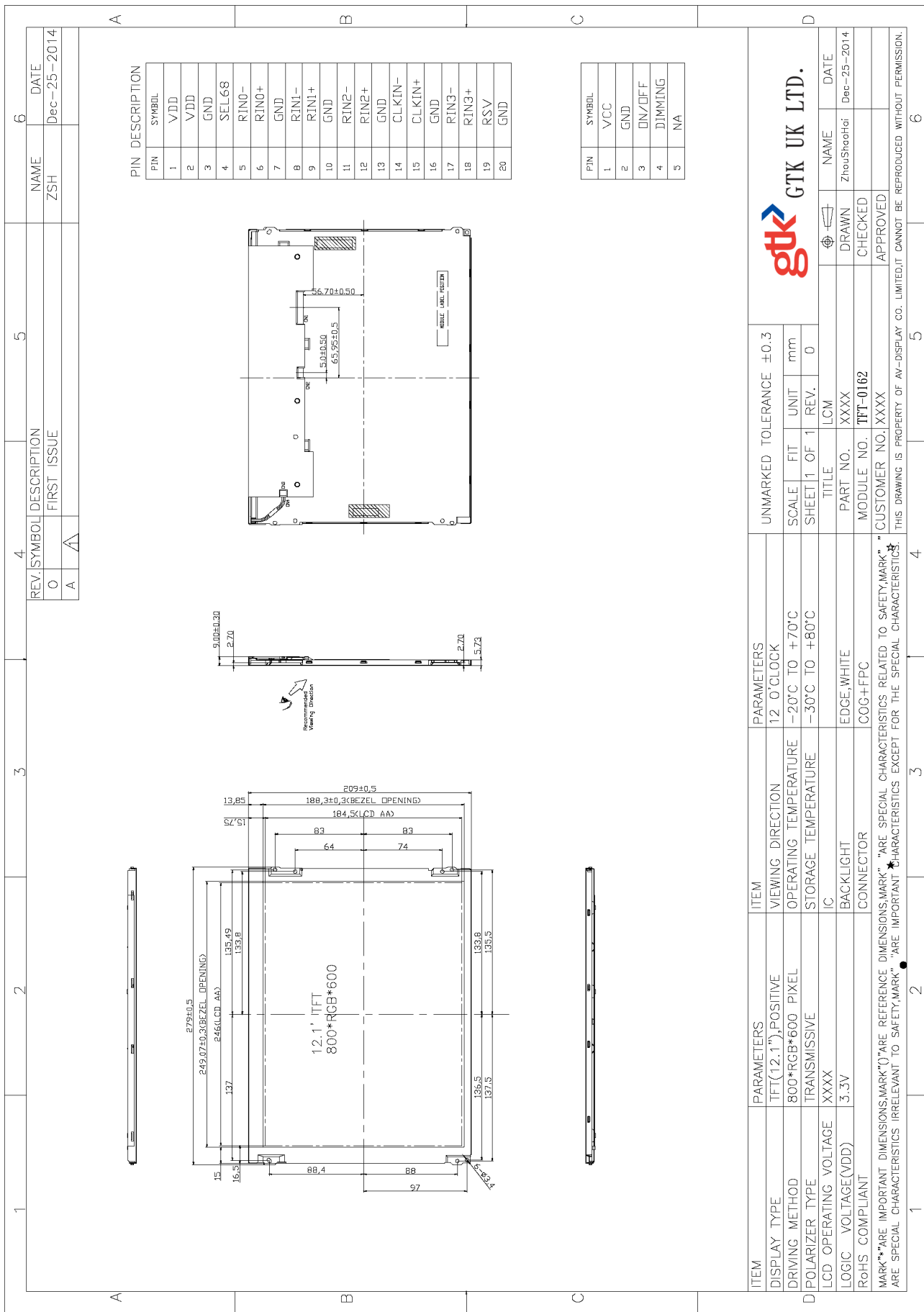
■ BACKLIGHT CHARACTERISTICS

Parameter	Symbol	Min	Typ	Max	Unit	Remark
LED Forward Voltage	V _F	25.2	27.9	31.5	V	-
LED Forward Current	I _F		160		mA	-
LED Power Consumption	P _{LED}	4.03	4.47	5.04	W	Note 1
LED Life-Time	N/A	50,000			Hrs	I _F = 80mA Note 2

Notes:

1. Calculator Value for reference $I_F \times V_F \times \text{LED Quantity} = P_{LED}$
2. The LED Life-time define as the estimated time to 50% degradation of initial luminous.

EXTERNAL DIMENSIONS



■ ELECTRO-OPTICAL CHARACTERISTICS

Item of electro-optical characteristics	Symbol	Condition	Min	Typ	Max	Unit	Remark	Note
Response time	Tr+ Tf		–	30	–	ms	Fig.1	4
Contrast ratio	Cr		600	800	–	---	FIG 2.	1
Luminance uniformity	δ WHITE		75	80	–	%	FIG 2.	3
Surface Luminance	Lv		330	450	–	cd/m ²	FIG 2.	2
Viewing angle range	θ	∅ = 90°	55	65	–	deg	FIG 3.	6
		∅ = 270°	65	75	–	deg	FIG 3.	
		∅ = 0°	70	80	–	deg	FIG 3.	
		∅ = 180°	70	80	–	deg	FIG 3.	
CIE (x, y) chromaticity	Red x	θ=0° ∅=0° Ta=25°C		TBD		-	FIG 2.	5
	Red y			TBD		-		
	Green x			TBD		-		
	Green y			TBD		-		
	Blue x			TBD		-		
	Blue y			TBD		-		
	White x			TBD		-		
	White y			TBD		-		

Note1. Contrast Ratio(CR) is defined mathematically by the following formula. For more information see FIG 2.:

$$\text{Contrast Ratio} = \frac{\text{Average Surface Luminance with all white pixels (P1, P2, P3, P4, P5)}}{\text{Average Surface Luminance with all black pixels (P1, P2, P3, P4, P5)}}$$

Note2. Surface luminance is the LCD surface from the surface with all pixels displaying white. For more information see FIG 2.

$$L_v = \text{Average Surface Luminance with all white pixels (P1, P2, P3, P4, P5)}$$

Note3. The uniformity in surface luminance (δ WHITE) is determined by measuring luminance at each test position 1 through 5, and then dividing the maximum luminance of 5 points luminance by minimum luminance of 5 points luminance. For more information see FIG 2.

$$\delta \text{ WHITE} = \frac{\text{Minimum Surface Luminance with all white pixels (P1, P2, P3, P4, P5)}}{\text{Maximum Surface Luminance with all white pixels (P1, P2, P3, P4, P5)}}$$

Note4. Response time is the time required for the display to transition from White to black(Rise Time, Tr) and from black to white(Decay Time, Tf). For additional information see FIG 1..

Note5. CIE (x, y) chromaticity, The x,y value is determined by screen active area position NO.5 For more information see FIG 2.

Note6. Viewing angle is the angle at which the contrast ratio is greater than 2. For TFT module the contrast ratio is greater than 10. The angles are determined for the horizontal or x axis and the vertical or y axis with respect to the z axis which is normal to the LCD surface. For more information see FIG 3.

Note7. For Viewing angle and response time testing, the testing data is base on Autronic-Melchers's ConoScope. Series Instruments. For contrast ratio, Surface Luminance, Luminance uniformity and CIE, the testing data is base on TOPCON's BM-5 photo detector or compatible.

Note8. For TFT module, Gray scale reverse occurs in the direction of panel viewing angle

FIG.1. The definition of Response Time

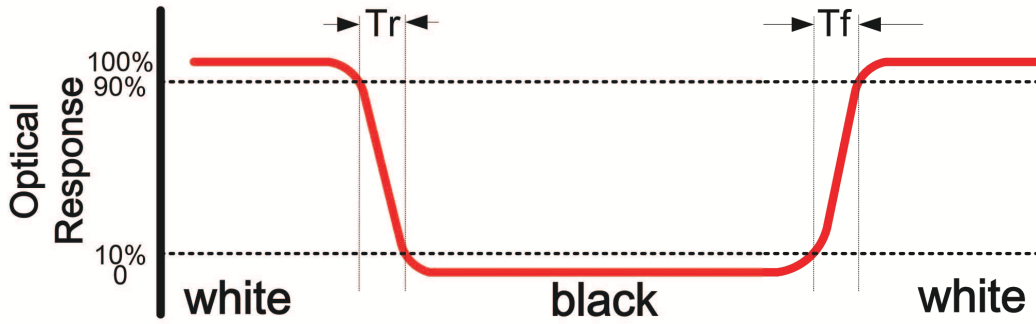


FIG.2. Measuring method for Contrast ratio, surface luminance, Luminance uniformity, CIE (x, y) chromaticity

A : 5 mm
 B : 5 mm
 H, V : Active Area
 Light spot size $\varnothing=5\text{mm}$, 500mm distance from the LCD surface to detector lens
 measurement instrument is TOPCON's luminance meter BM-5

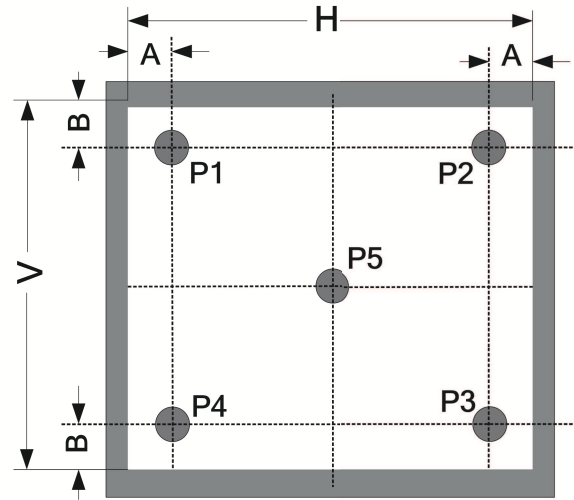
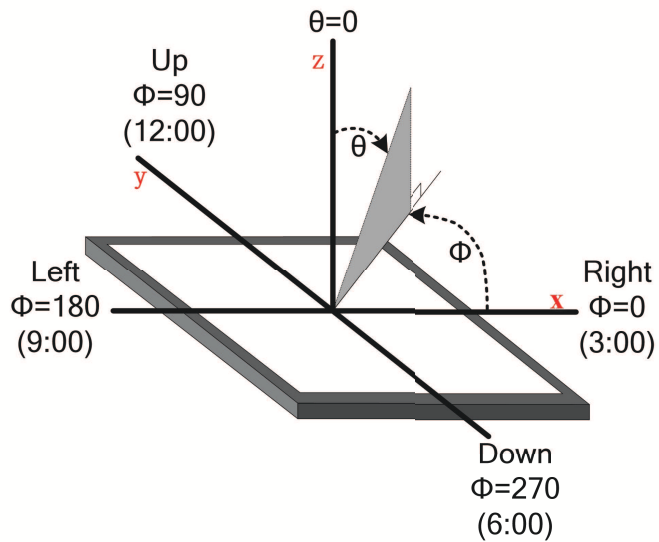


FIG.3. The definition of viewing angle



■ INTERFACE DESCRIPTION

Interface NO.	NAME	I/O or connect to	DESCRIPTION
1-2	VDD	P	Power Supply, 3.3V (typical)
3	GND	P	Ground
4	SEL68	I	LVDS 6/8 bit select function control, Low or NC 6 bit Input Mode High 8bit Input Mode
5	RIN0-	I	- LVDS differential data input (R0-R5,G0)
6	RIN0+	I	+LVDS differential data input (R0-R5,G0)
7	GND	P	Ground
8	RIN1-	I	- LVDS differential data input(G1-G5,B0-B1)
9	RIN1+	I	+LVDS differential data input (G1-G5,B0-B1)
10	GND	P	Ground
11	RIN2-	I	- LVDS differential data input (B2-B5,HS,VS,DE)
12	RIN2+	I	+LVDS differential data input (B2-B5,HS,VS,DE)
13	GND	P	Ground
14	CIKIN-	I	-LVDS differential clock input
15	CIKIN+	I	+LVDS differential clock input
16	GND	P	Ground
17	RIN3-	I	- LVDS differential data input (R6-R7,G6-G7, B6-B7,RSV)
18	RIN3+	I	+LVDS differential data input (R6-R7,G6-G7, B6-B7,RSV)
19	RSV	/	Reverse scan founction(H:enable,L/NC:disable)
20	GND	P	Ground

Backlight interface

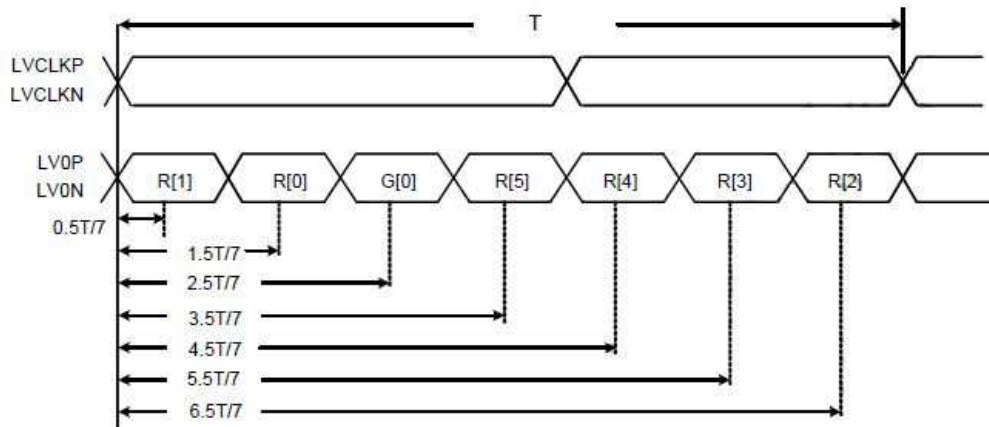
Interface NO.	symbol	DESCRIPTION
1	VCC	12V input
2	GND	GND
3	ON/OFF	5V-ON,0V-OFF
4	Dimming	PWM
5	NA	

Remark: PWM frequency 120~1Khz

■ AC CHARACTERISTICS

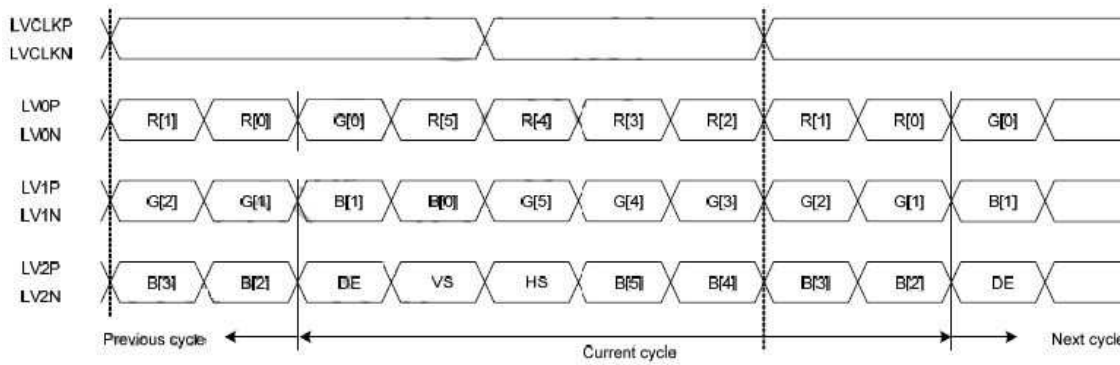
Signal timing specification

Ideal strobe position for LVDS input

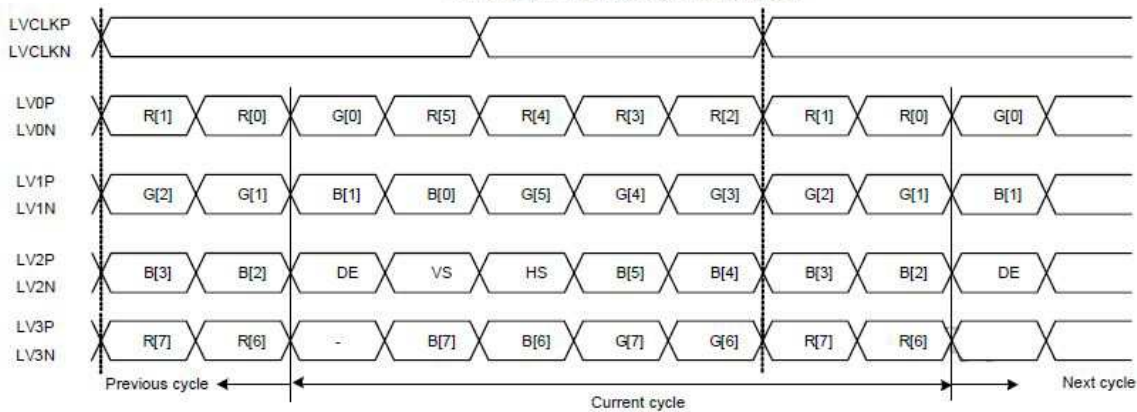


LVDS input data ideal strobe position

LVDS input data mapping



6-bit LVDS input data mapping



8-bit LVDS input data mapping

Input timing

DE mode

Parameter	Symbol	Condition	SVGA 800X600	Unit
DCLK frequency	F_{DCLK}	Typ.	40	MHZ
Horizontal total timing	T_H	Min.	900	T_{DCLK}
		Typ.	1056	T_{DCLK}
		Max.	2047	T_{DCLK}
Horizontal active timing	T_{HA}	Typ.	800	T_{DCLK}
Vertical total timing	T_V	Min.	604	T_H
		Typ.	630	T_H
		Max.	1023	T_H
Vertical active timing	T_{VA}	Typ.	600	T_H

SYNC mode

Parameter	Symbol	SVGA 800X600	Unit
DCLK frequency	F_{DCLK}	40	MHZ
Horizontal total timing	T_H	1056	T_{DCLK}
HD pulse width	T_{WHL}	3	T_{DCLK}
HD back porch	T_{HBP}	216	T_{DCLK}
HD front porch	T_{HFP}	37	T_{DCLK}
Horizontal active timing	T_{HA}	800	T_{DCLK}
Vertical total timing	T_V	630	T_H
VD pulse width	T_{WVL}	1	T_H
VD back porch	T_{VBP}	27	T_H
VD front porch	T_{VFP}	2	T_H
Vertical active timing	T_{VA}	600	T_H

■ POWER SEQUENCE

Power up sequence

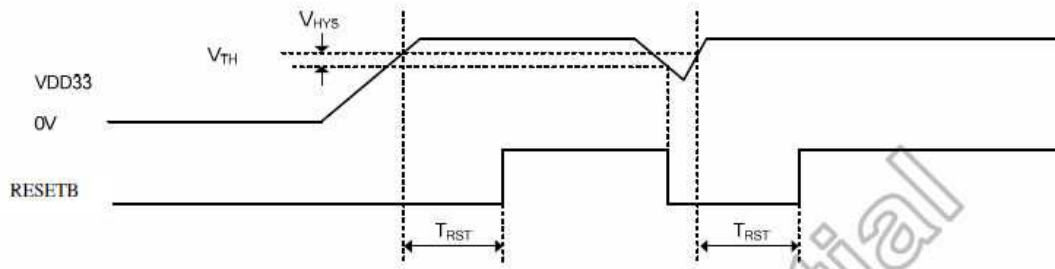


Figure 0.3: Power up sequence

Symbol	Parameter	Condition	Spec.			Unit
			Min.	Typ.	Max.	
V_{TH}	Reset threshold voltage	-	2	2.1	2.2	V
V_{HYS}	Hysteresis voltage	-	-	200	-	mV
T_{RST}	Reset duration @R=10K Ω , C=1 μ F	-	10	-	-	ms

■ **REFERENCE APPLICATION CIRCUIT**

Please consult our technical department for detail information.

■ RELIABILITY TEST CONDITIONS

No.	Test Item	Test Condition	Inspection after test
1	High Temperature Storage	80±2℃/240 hours	Inspection after 2~4hours storage at room temperature, the sample shall be free from defects: 1.Air bubble in the LCD; 2.Sealleak; 3.Non-display; 4.missing segments; 5.Glass crack; 6.Current Idd is twice higher than initial value.
2	Low Temperature Storage	-30±2℃/240 hours	
3	High Temperature Operating	70±2℃/120 hours	
4	Low Temperature Operating	-20±2℃/120 hours	
5	Temperature Cycle	-20±2℃~25~70±2℃×10cycles (30min.) (5min.) (30min.)	
6	Damp Proof Test	50℃±5℃×90%RH/120 hours	
7	Vibration Test	Frequency: 10Hz~55Hz~10Hz Amplitude: 1.5mm, X, Y, Z direction for total 3hours (Packing condition)	
8	Dropping test	Drop to the ground from 1m height, one time, every side of carton. (Packing condition)	
9	ESD test	Voltage:±8KV R: 330Ω C: 150pF Air discharge, 10time	

Remark:

- 1.The test samples should be applied to only one test item.
- 2.Sample size for each test item is 5~10pcs.
- 3.For Damp Proof Test, Pure water(Resistance > 10MΩ) should be used.
- 4.In case of malfunction defect caused by ESD damage, if it would be recovered to normal state after resetting, it would be judged as a good part.
- 5.EL evaluation should be excepted from reliability test with humidity and temperature: Some defects such as black spot/blemish can happen by natural chemical reaction with humidity and Fluorescence EL has.
- 6.Failure Judgment Criterion: Basic Specification, Electrical Characteristic, Mechanical Characteristic, Optical Characteristic.

■ INSPECTION CRITERION

This specification is made to be used as the standard acceptance/rejection criteria for Normal LCM Product.

1 Sample plan

Sampling plan according to GB/T2828.1-2003/ISO 2859-1 : 1999 and ANSI/ASQC Z1.4-1993, normal level 2 and based on:

Major defect: AQL 0.65

Minor defect: AQL 1.5

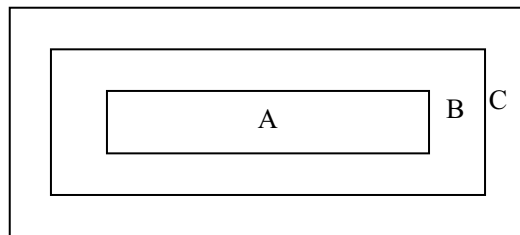
2. Inspection condition

● Viewing distance for cosmetic inspection is about 30cm with bare eyes, and under an environment of 20~40W light intensity, all directions for inspecting the sample should be within 45° against perpendicular line. (Normal temperature 20~25°C and normal humidity 60±15%RH).

● Driving voltage

The Vop value from which the most optimal contrast can be obtained near the specified Vop in the specification (Within ±0.5V of the typical value at 25°C.).

3. Definition of inspection zone in LCD.



Zone A: character/Digit area

Zone B: viewing area except Zone A (ZoneA+ZoneB=minimum Viewing area)

Zone C: Outside viewing area (invisible area after assembly in customer's product)

Fig.1 Inspection zones in an LCD.

Note: As a general rule, visual defects in Zone C are permissible, when it is no trouble for quality and assembly of customer's product.

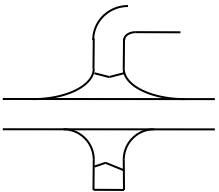
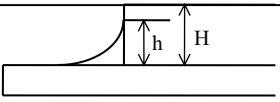
4. Inspection Standard

4.1 Major Defect

Item No	Items to be inspected	Inspection Standard	Classification of defects
4.1.1	All functional defects	1) No display 2) Display abnormally 3) Missing vertical, horizontal segment 4) Short circuit 5) Back-light no lighting, flickering and abnormal lighting.	Major
4.1.2	Missing	Missing component	
4.1.3	Outline dimension	Overall outline dimension beyond the drawing is not allowed.	

4.2 Cosmetic Defect

4.2.1 Module Cosmetic Criteria

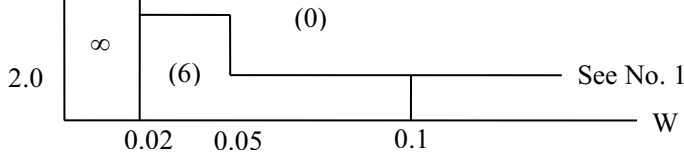
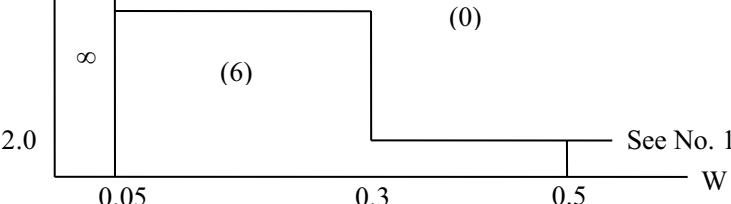
No.	Item	Judgement Criterion	Partition
1	Difference in Spec.	None allowed	Major
2	Pattern peeling	No substrate pattern peeling and floating	Major
3	Soldering defects	No soldering missing No soldering bridge No cold soldering	Major Major Minor
4	Resist flaw on Printed Circuit Boards	visible copper foil ($\varnothing 0.5\text{mm}$ or more) on substrate pattern	Minor
5	Accretion of metallic Foreign matter	No accretion of metallic foreign matters (Not exceed $\varnothing 0.2\text{mm}$)	Minor Minor
6	Stain	No stain to spoil cosmetic badly	Minor
7	Plate discoloring	No plate fading, rusting and discoloring	Minor
8	Solder amount	a. Soldering side of PCB Solder to form a 'Filet' all around the lead. Solder should not hide the lead form perfectly. (too much) b. Components side (In case of 'Through Hole PCB') Solder to reach the Components side of PCB.	Minor
	1. Lead parts		
	2. Flat packages	Either 'Toe' (A) or 'Seal' (B) of the lead to be covered by 'Filet'. Lead form to be assume over solder.	Minor
	3. Chips	$(3/2) H \geq h \geq (1/2) H$ 	Minor

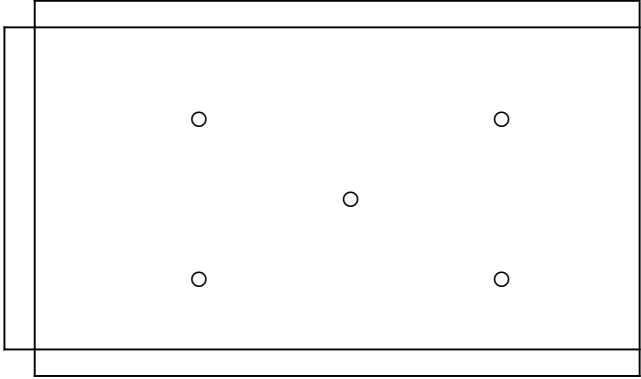
9	Solder splash	ball/Solder	a. The spacing between solder ball and the conductor or solder pad $h \geq 0.13\text{mm}$ The diameter of solder ball $d \leq 0.15\text{mm}$.		Minor
			b. The quantity of solder balls or solder Splashes isn't beyond 5 in 600mm^2 .		Minor
			c. Solder balls/Solder splashes do not violate minimum electrical clearance.		Major
			d. Solder balls/Solder splashes must be entrapped/encapsulated Or attached to the metal surface.		Minor
			NOTE: Entrapped/encapsulated/attached is intended to mean that normal service environment of the product will not cause a solder ball to become dislodged.		

4.2.2 Cosmetic Criteria (Non-Operating)

No.	Defect	Judgment Criterion	Partition										
1	Spots	In accordance with <i>Screen Cosmetic Criteria (Operating) No.1.</i>	Minor										
2	Lines	In accordance with <i>Screen Cosmetic Criteria (Operating) No.2.</i>	Minor										
3	Bubbles in polarizer	<table border="1"> <thead> <tr> <th>Size : d mm</th> <th>Acceptable Qty in active area</th> </tr> </thead> <tbody> <tr> <td>$d \leq 0.3$</td> <td>Disregard</td> </tr> <tr> <td>$0.3 < d \leq 1.0$</td> <td>3</td> </tr> <tr> <td>$1.0 < d \leq 1.5$</td> <td>1</td> </tr> <tr> <td>$1.5 < d$</td> <td>0</td> </tr> </tbody> </table>	Size : d mm	Acceptable Qty in active area	$d \leq 0.3$	Disregard	$0.3 < d \leq 1.0$	3	$1.0 < d \leq 1.5$	1	$1.5 < d$	0	Minor
Size : d mm	Acceptable Qty in active area												
$d \leq 0.3$	Disregard												
$0.3 < d \leq 1.0$	3												
$1.0 < d \leq 1.5$	1												
$1.5 < d$	0												
4	Scratch	In accordance with spots and lines operating cosmetic criteria. When the light reflects on the panel surface, the scratches are not to be remarkable.	Minor										
5	Allowable density	Above defects should be separated more than 30mm each other.	Minor										
6	Coloration	Not to be noticeable coloration in the viewing area of the LCD panels. Back-lit type should be judged with back-lit on state only.	Minor										
7	Contamination	Not to be noticeable.	Minor										

4.2.3 Cosmetic Criteria (Operating)

No.	Defect	Judgment Criterion	Partition																																												
1	Spots	<p>A) Clear</p> <table border="1" data-bbox="434 300 1267 631"> <thead> <tr> <th>Lcd size</th> <th>Size : d mm</th> <th>Acceptable Qty in active area</th> </tr> </thead> <tbody> <tr> <td rowspan="4">Lcd size ≤ 8.0'</td> <td>d ≤ 0.1</td> <td>Disregard</td> </tr> <tr> <td>0.1 < d ≤ 0.2</td> <td>6</td> </tr> <tr> <td>0.2 < d ≤ 0.3</td> <td>2</td> </tr> <tr> <td>0.3 < d</td> <td>0</td> </tr> <tr> <td rowspan="4">Lcd size > 8.0'</td> <td>d ≤ 0.1</td> <td>Disregard</td> </tr> <tr> <td>0.1 < d ≤ 0.3</td> <td>10</td> </tr> <tr> <td>0.3 < d ≤ 0.5</td> <td>5</td> </tr> <tr> <td>0.5 < d</td> <td>0</td> </tr> </tbody> </table> <p>Note : Including pin holes and defective dots which must be within one pixel size; Total defective point shall not exceed 6 pcs no more than 8 inch LCD and 10PCS for more than 8 inch LCD.</p> <p>B) Unclear</p> <table border="1" data-bbox="434 824 1267 1205"> <thead> <tr> <th>Lcd size</th> <th>Size : d mm</th> <th>Acceptable Qty in active area</th> </tr> </thead> <tbody> <tr> <td rowspan="4">Lcd size ≤ 8.0'</td> <td>d ≤ 0.2</td> <td>Disregard</td> </tr> <tr> <td>0.2 < d ≤ 0.5</td> <td>6</td> </tr> <tr> <td>0.5 < d ≤ 0.7</td> <td>2</td> </tr> <tr> <td>0.7 < d</td> <td>0</td> </tr> <tr> <td rowspan="5">Lcd size > 8.0'</td> <td>d ≤ 0.2</td> <td>Disregard</td> </tr> <tr> <td>0.2 < d ≤ 0.5</td> <td>10</td> </tr> <tr> <td>0.5 < d ≤ 0.7</td> <td>3</td> </tr> <tr> <td>0.7 < d ≤ 1.0</td> <td>1</td> </tr> <tr> <td>1.0 < d</td> <td>0</td> </tr> </tbody> </table> <p>Note : Total defective point shall not exceed 6 pcs for no more than 8 inch LCD and 10PCS for more than 8 inch LCD.</p>	Lcd size	Size : d mm	Acceptable Qty in active area	Lcd size ≤ 8.0'	d ≤ 0.1	Disregard	0.1 < d ≤ 0.2	6	0.2 < d ≤ 0.3	2	0.3 < d	0	Lcd size > 8.0'	d ≤ 0.1	Disregard	0.1 < d ≤ 0.3	10	0.3 < d ≤ 0.5	5	0.5 < d	0	Lcd size	Size : d mm	Acceptable Qty in active area	Lcd size ≤ 8.0'	d ≤ 0.2	Disregard	0.2 < d ≤ 0.5	6	0.5 < d ≤ 0.7	2	0.7 < d	0	Lcd size > 8.0'	d ≤ 0.2	Disregard	0.2 < d ≤ 0.5	10	0.5 < d ≤ 0.7	3	0.7 < d ≤ 1.0	1	1.0 < d	0	Minor
Lcd size	Size : d mm	Acceptable Qty in active area																																													
Lcd size ≤ 8.0'	d ≤ 0.1	Disregard																																													
	0.1 < d ≤ 0.2	6																																													
	0.2 < d ≤ 0.3	2																																													
	0.3 < d	0																																													
Lcd size > 8.0'	d ≤ 0.1	Disregard																																													
	0.1 < d ≤ 0.3	10																																													
	0.3 < d ≤ 0.5	5																																													
	0.5 < d	0																																													
Lcd size	Size : d mm	Acceptable Qty in active area																																													
Lcd size ≤ 8.0'	d ≤ 0.2	Disregard																																													
	0.2 < d ≤ 0.5	6																																													
	0.5 < d ≤ 0.7	2																																													
	0.7 < d	0																																													
Lcd size > 8.0'	d ≤ 0.2	Disregard																																													
	0.2 < d ≤ 0.5	10																																													
	0.5 < d ≤ 0.7	3																																													
	0.7 < d ≤ 1.0	1																																													
	1.0 < d	0																																													
2	Lines	<p>A) Clear</p>  <p>Note : () - Acceptable Qty in active area L - Length (mm) W - Width (mm) ∞ - Disregard</p> <p>B) Unclear</p>  <p>'Clear' = The shade and size are not changed by V_{op}. 'Unclear' = The shade and size are changed by V_{op}.</p>	Minor																																												

3	Rubbing line	Not to be noticeable.	Minor
4	Allowable density	Above defects should be separated more than 10mm each other.	Minor
5	Rainbow	Not to be noticeable.	Minor
6	Dot size	To be 95% ~ 105% of the dot size (Typ.) in drawing. Partial defects of each dot (ex. pin-hole) should be treated as 'Spot'. (see <i>Screen Cosmetic Criteria (Operating) No.1</i>)	Minor
7	Uneven brightness (only back-lit type module)	<p>Uneven brightness must be $B_{MAX} / B_{MIN} \leq 2$</p> <ul style="list-style-type: none"> - B_{MAX} : Max. value by measure in 5 points - B_{MIN} : Min. value by measure in 5 points <p>Divide active area into 4 vertically and horizontally. Measure 5 points shown in the following figure.</p>  <p style="text-align: center;">○ : Measuring points</p>	Minor

Note :

- (1) Size : $d = (\text{long length} + \text{short length}) / 2$
- (2) The limit samples for each item have priority.
- (3) Complex defects are defined item by item, but if the numbers of defects are defined in above table, the total number should not exceed 10.
- (4) In case of 'concentration', even the spots or the lines of 'disregarded' size should not allowed. Following three situations should be treated as 'concentration'.
 - 7 or over defects in circle of $\varnothing 5\text{mm}$.
 - 10 or over defects in circle of $\varnothing 10\text{mm}$.
 - 20 or over defects in circle of $\varnothing 20\text{mm}$.

■ **PACKING SPECIFICATION**

Please consult our technical department for detail information.