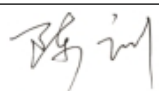

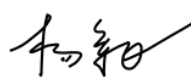


# SPECIFICATION FOR IPS101A104R

## Customer Approval:

--

	SIGNATURE	DATE
PREPARED BY		2021.6.10
CHECKED BY		2021.6.10
APPROVED BY		2021.6.10

Notes:

- 1、 Please contact GTK before assigning your product based on this module specification.
- 2、 To improve the quality of product, and this product specification is subject to change without any notice.



---

<b>REVISION RECORD</b>			
<b>REV NO.</b>	<b>CONTENTS</b>	<b>REV DATE</b>	<b>REMARKS</b>
V1.0	First Release		
V1.1	Increase the brightness and contrast information	2021.6.10	



---

## CONTENTS

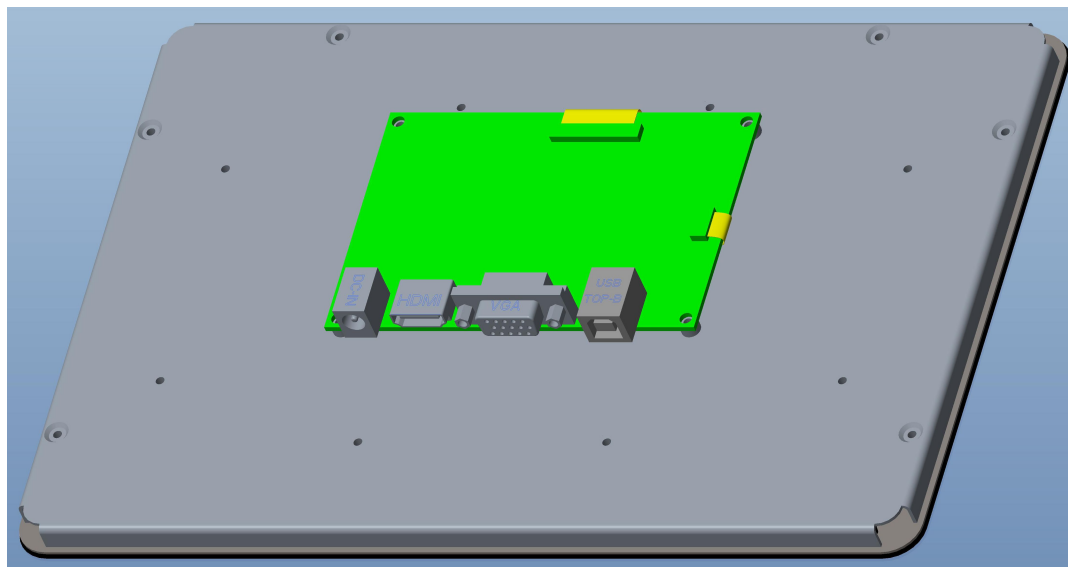
1. Product Overview.....	4
2. Product Features.....	5
2.1 LCD Specification.....	5
2.2 Touch Panel Specification.....	5
2.3 Electronic Characteristic.....	5
2.4 Environmental Parameters.....	5
3. Interface Description.....	6
3.1 Power Supply Interface.....	6
3.2 HDMI Interface.....	6
3.3 VGA Interface.....	6
3.4 Touch Panel Interface.....	6
4. Exploded Diagram.....	7
5. Mechanical Dimension.....	8

## 1.Product Overview

This solution is 10.1-inch open frame LCD touchscreen , which makes it be able to automatically detect and switch between video signal input HDMI and VGA. It is suitable for multiple market segments and display applications, also perfect for Retail self-service , POS Kiosks , Access Control , Casino, Industrial Automation, and other Embedded Applications.



**Front View**



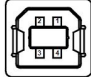
**Back View**

## 2. Product Features

### 2.1 LCD Specification

No.	Item	Contents	Unit
1	LCD Size	10.1	inch
2	LCD Type	IPS/Normally Black/Transmissive	/
3	Viewing Direction(eye)	FREE	/
4	Recommend Resolution(H*V)	1280*800	Pixel
5	Pixel Pitch	0.1695*0.1695	mm
6	Support Color	16.7	M
7	Module Size (L*W*H)	255.0*172.6*29.2	mm
8	Active Area (L*W)	216.96*135.6	mm
10	Back Light Type	LED	/
11	Luminance	500 (Max value)	cd/m <sup>2</sup>
12	Contrast ratio	800(Typ.)	
13	LED life-time	50000	Hr
14	Video Input Interface	HDMI / VGA	/

### 2.2 Touch Panel Specification

No.	Item	Description
1	Type	Capacitive Touch
2	Surface Hardness	6H (Pencil , Loading 500g, 45 deg)
3	Support finger number	5 Point
4	Touch System Interface	USB Type - B 

### 2.3 Electronic Characteristic

No.	Item	Symbol	Values			Unit
			Min.	Typ.	Max.	
1	Power supply voltage (Display )	VDD	-	12	-	V
2	Power supply voltage (TP Module)	VDD	-	5.0	-	V
3	Power Consumption (12V DC)	ILED		TBD		mA

### 2.4 Environmental Parameters

No.	Item	Symbol	Values			Unit
			Min.	Typ.	Max.	
1	Operation temperature	Top	-10	25	+60	°C
2	Storage temperature	Tst	-20	25	+70	°C

3	Humidity	RH	-		90%(Max60 °C)	RH
---	----------	----	---	--	---------------	----

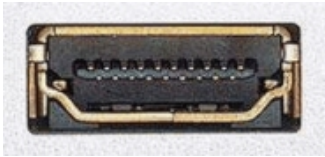
### 3. Interface

#### 3.1 Power supply Interface



DC 12V/2A

#### 3.2 HDMI Interface



Standard HDMI Type-A

#### 3.3 VGA Interface



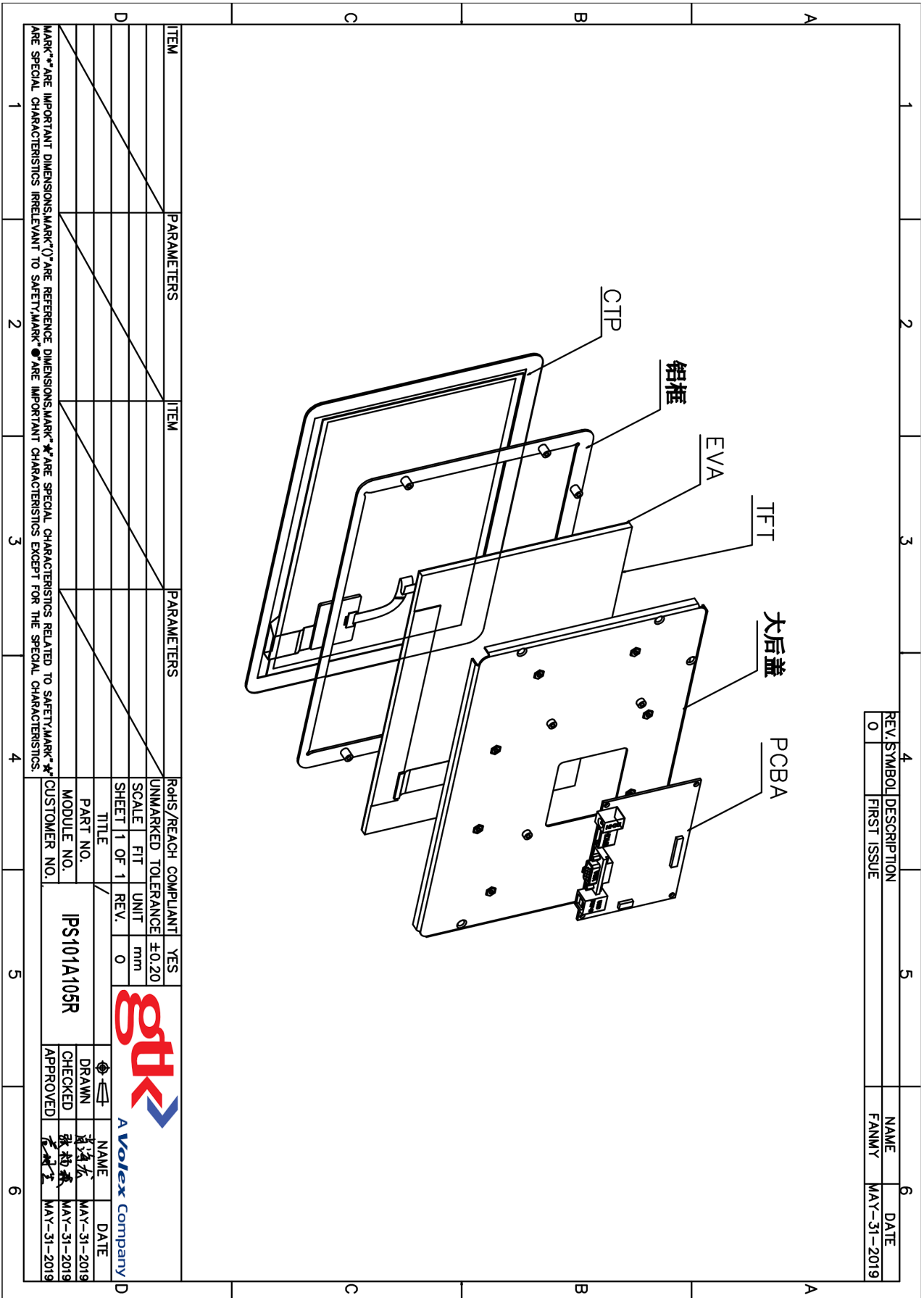
Standard VGA

#### 3.4 Touch Panel Interface



Standard USB Type-B

# 4. Exploded Diagram



REV	SYMBOL	DESCRIPTION	NAME	DATE
0		FIRST ISSUE	FANNY	MAY-31-2019

ITEM	PARAMETERS	ITEM	PARAMETERS
			ROHS/REACH COMPLIANT YES
			UNMARKED TOLERANCE ±0.20
			SCALE FT UNIT mm
			SHEET 1 OF 1 REV. 0
			TITLE
			PART NO.
			MODULE NO.
			IPS101A105R
			CUSTOMER NO.

A **Volex** Company

DRAWN	NAME	DATE
CHECKED	张柏森	MAY-31-2019
APPROVED	张柏森	MAY-31-2019

