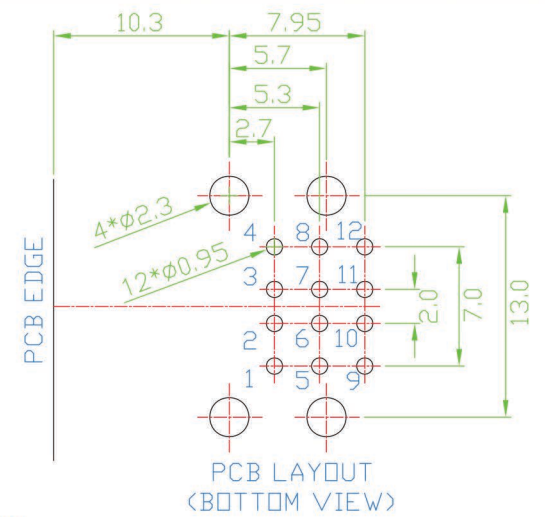
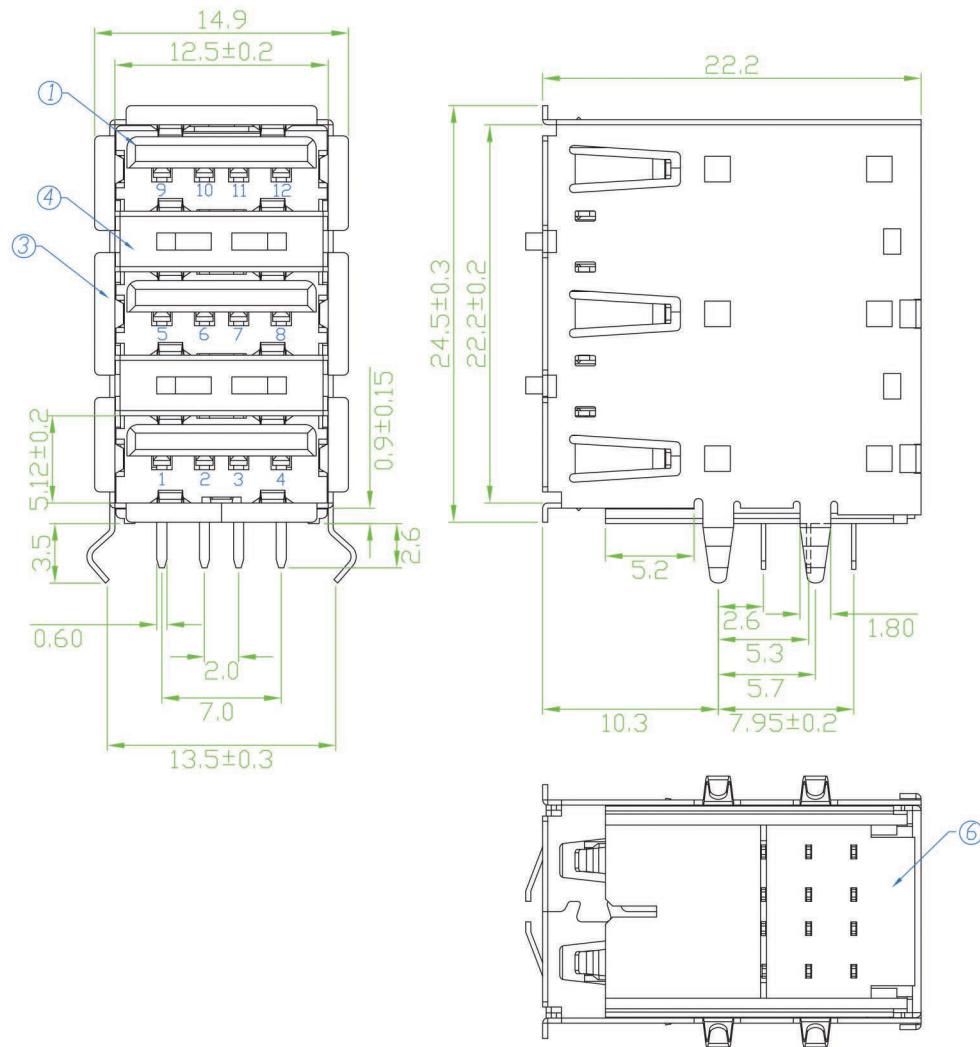


REV	ZONE	REVISION	DATE



**Specification:**  
**Contact Resistance:** 30m Ohm Max.  
**Insulation Resistance:** 1000M Ohm Min. At 500VDC.  
**Rated Voltage And Current:** 1.5A At 250VAC Minimum.  
**Dielectric Withstanding Voltage:**  
750V AC (rms) for 1 Minute(Rev. 1.1)  
**Durability (Life Test):** 1500 Cycles  
**Insertion Force:** 35 Newton Maximum.  
**Extraction Force:** 10 Newton Minimum.

MO.	NAME	MATERIAL	FINISH	Q'TY	REMARK
1	HOUSING	PBT G.F.	BLACK	1	
2	PIN TERM.	PHOS. BRONZE T:0.25	GOLD-TIN PLATED	12	Gold:1~3u"; Ni:40~60u"; TIN:120u" (100% pure Tin of lead free plating)
3	SHELL	BRASS, T:0.3	TIN PLATED	1	TIN:120~200u"
4	SPRING CLIP	BRASS, T:0.3	TIN PLATED	1	TIN:120~200u"
5	REAR SHELL	SPCC, T:0.3	NICKEL PLATED	1	NI:80~120u"
6	BOTTOM COVER	PBT G.F.	BLACK	1	

ROHS COMPLIANT



COMPUTER MO.			UNIT	SCALE	PART NAME		
			mm	1:1	TRIPLE USB A TYPE FLAT 12 PIN DIP		
APPD.	CKD.	DWG.	DATE	TOLERANCE	PART MO.	REV.	
MODEL		PAGE 1 OF 1	TINA	07-05-10	USBT-AT1-B-R	REV	

X. ±0.38  
.X ±0.25  
.XX ±0.13  
.XXX ±0.05