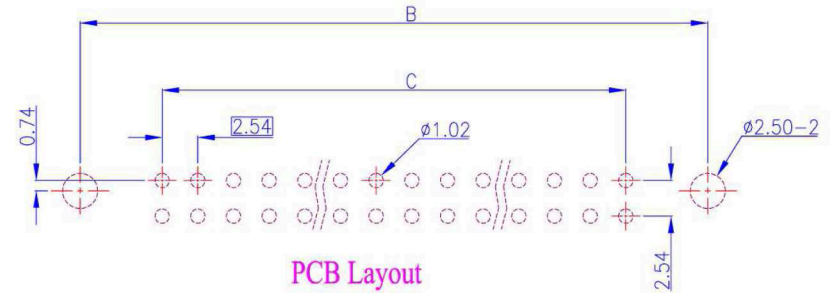
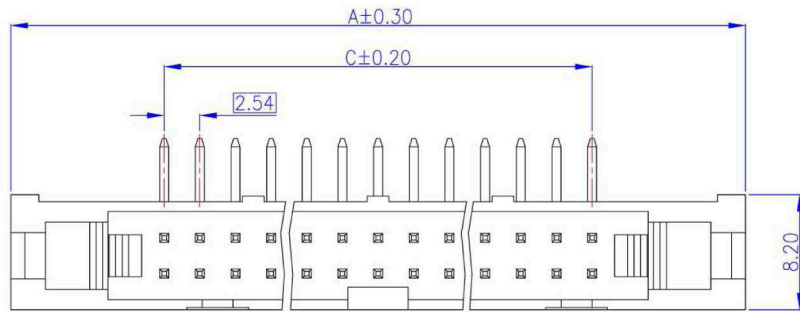
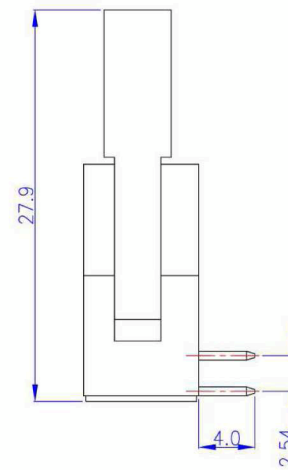
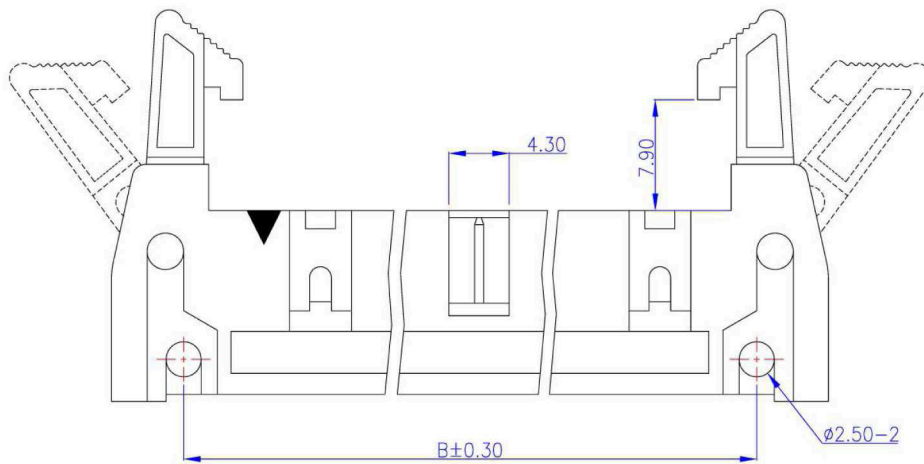


Rev.	Date	Description
A	2004/12/14	New Drawing
B	2005/04/25	Modify Drawing
C	2006/06/20	Modify Drawing
D	2006/09/08	Modify Drawing



PCB Layout  
(Top View)



RoHS COMPLIANT

Order Information	Dimensions			
	Pos.	A	B	C
SCP10GR1 -R	10	32.00	21.84	10.16
SCP12GR1 -R	12	34.54	24.38	12.70
SCP14GR1 -R	14	37.08	26.92	15.24
SCP16GR1 -R	16	39.62	29.46	17.78
SCP20GR1 -R	20	44.70	34.54	22.86
SCP24GR1 -R	24	49.78	39.62	27.94
SCP26GR1 -R	26	52.32	42.16	30.48
SCP30GR1 -R	30	57.40	47.24	35.56
SCP34GR1 -R	34	62.48	52.32	40.64
SCP40GR1 -R	40	70.10	59.94	48.26
SCP50GR1 -R	50	82.80	72.64	60.96



**Material and Finish**

1. Housing: PBT (UL94V-0), Black.
2. Terminal: Sq. 0.64mm Copper Alloy, Gold Plating.

**Electrical Characteristics**

1. Current Rating: 3.0 Amp. Max..
2. Dielectric Withstand Voltage: 1000V AC RMS for 60Seconds.
3. Insulation Resistance: 1000M Ohms Min. at 1000V DC.

**Mechanical Characteristics**

1. Operating Temperature: -55°C ~ +105°C

Tolerance	Scale	Unit	Drawn By	Checked By	Approved By
0.0 ±0.30	1:1	mm	Jue	Vivi	Alex
0.00 ±0.20					
0.000 ±0.10					
Drawing No. SCPxxGR1-R					

2.54mm Box Header Ejector Type  
PCB Mount Right Angle  
With Latch